



Herrick Primary School

SIG+ (Data Journey)

2016-2019

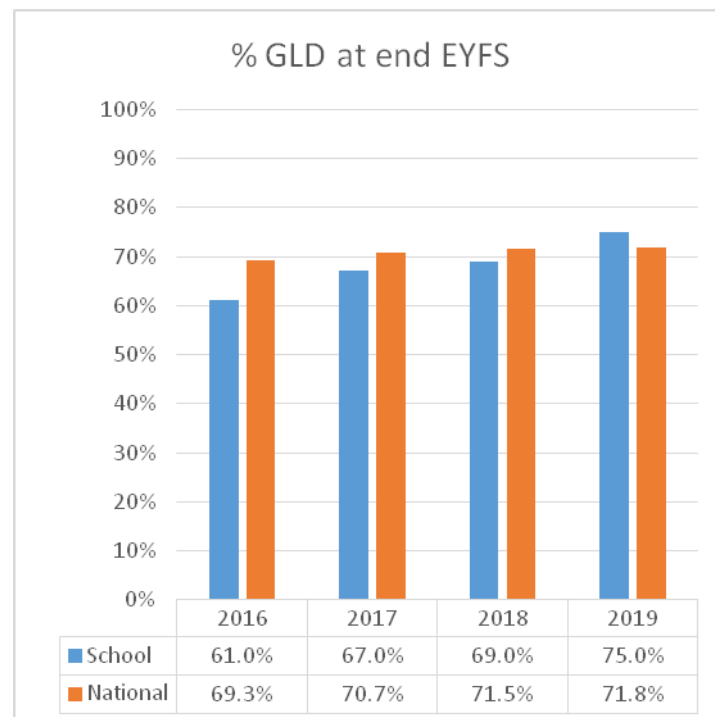
*16/9/19
Data Overview
(Sigplus.co.uk – J.Pembroke)*

Completed by U.Patel

Note: 'Pupil No. Gap' expresses the % gap between school and national result as a number of pupils
 eg:
 National result: 80%
 School Result: 60%
 Gap: -20%
 Number of pupils in cohort: 20
 Pupil No Gap = -4 (20% of 20 pupils)

Early Years Foundation Stage (EYFS) Good Level of Development (GLD) Pupils reaching expected development in 12 early learning goals

| % pupils reaching GLD at end of EYFS | | | | |
|--------------------------------------|-------|-------|-------|-------|
| | 2016 | 2017 | 2018 | 2019 |
| School | 61.0% | 67.0% | 69.0% | 75.0% |
| National | 69.3% | 70.7% | 71.5% | 71.8% |
| No. pupils | 56 | 42 | 58 | 48 |
| Pupil No. Gap | -4 | -1 | -1 | 1 |

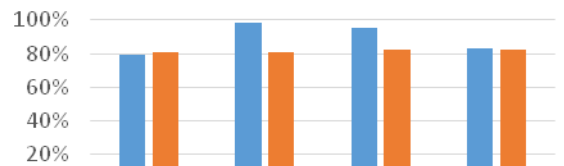


Phonics in Year 1 and 2

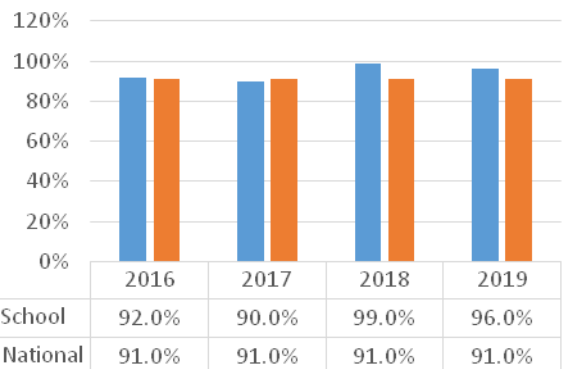
Pupils are counted as achieving the standard in Y1 and by the end of Y2 (the latter measure is cumulative)

| % pupils achieving phonics standard in Year 1 | | | | |
|---|-------|-------|-------|-------|
| | 2016 | 2017 | 2018 | 2019 |
| School | 79.0% | 98.0% | 95.0% | 83.0% |
| National | 81.0% | 81.0% | 82.0% | 82.0% |
| No. pupils | 57 | 55 | 42 | 59 |
| Pupil No. Gap | -1 | 9 | 5 | 0 |

% achieving phonics standard in Y1



% achieving phonics standard by end Y2



| % pupils achieving phonics standard by end of Year 2 | | | | |
|--|-------|-------|-------|-------|
| | 2016 | 2017 | 2018 | 2019 |
| School | 92.0% | 90.0% | 99.0% | 96.0% |
| National | 91.0% | 91.0% | 91.0% | 91.0% |
| No. pupils | 59 | 58 | 57 | 47 |
| Pupil No. Gap | 0 | 0 | 4 | 2 |

Key Stage 1

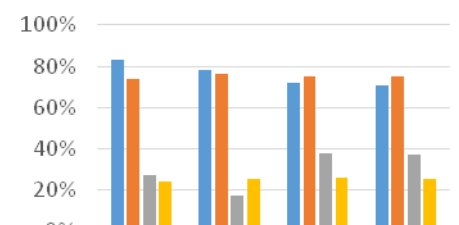
Note: Results in all subjects are based on teacher assessment

EXS+ = Expected

standard or above, GDS = greater depth standard

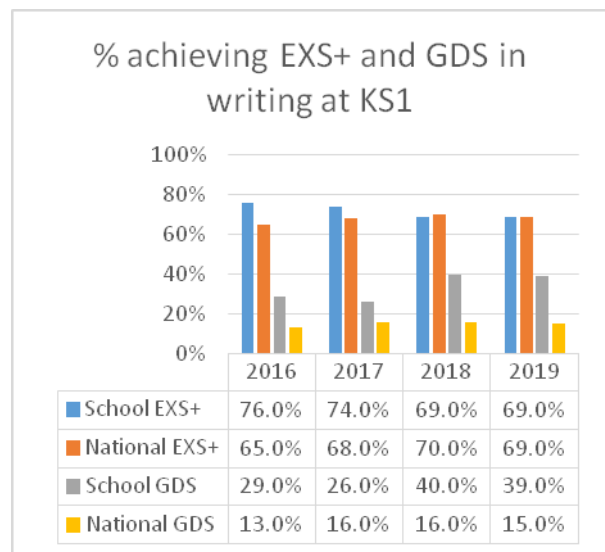
| % achieving EXS+ and GDS in reading at KS1 | | | | |
|--|-------|-------|-------|-------|
| | 2016 | 2017 | 2018 | 2019 |
| School EXS+ | 83.0% | 78.0% | 72.0% | 71.0% |
| National EXS+ | 74.0% | 76.0% | 75.0% | 75.0% |
| School GDS | 27.0% | 17.0% | 38.0% | 37.0% |
| National GDS | 24.0% | 25.0% | 26.0% | 25.0% |
| No. pupils | 59 | 58 | 58 | 45 |
| Pupil No. Gap (EXS) | 5 | 1 | -1 | -1 |
| Pupil No. Gap (GDS) | 1 | -4 | 6 | 5 |

% achieving EXS+ and GDS in reading at KS1

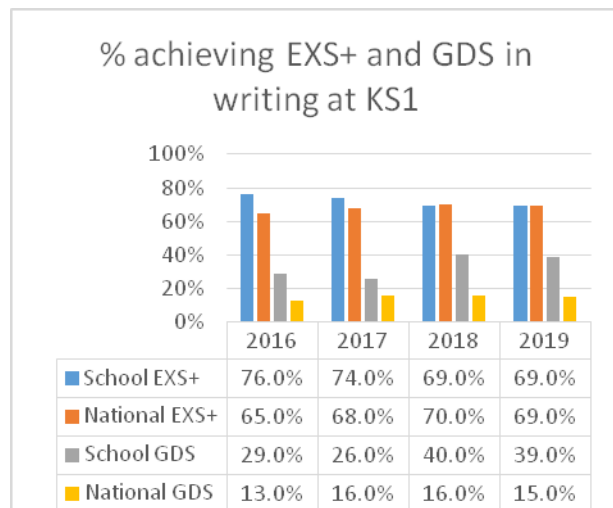


| Year | School EXS+ | National EXS+ | School GDS | National GDS |
|------|-------------|---------------|------------|--------------|
| 2016 | 83.0% | 74.0% | 27.0% | 24.0% |
| 2017 | 78.0% | 76.0% | 17.0% | 25.0% |
| 2018 | 72.0% | 75.0% | 38.0% | 26.0% |
| 2019 | 71.0% | 75.0% | 37.0% | 25.0% |

| % achieving EXS+ and GDS in writing at KS1 | | | | |
|--|-------|-------|-------|-------|
| | 2016 | 2017 | 2018 | 2019 |
| School EXS+ | 76.0% | 74.0% | 69.0% | 69.0% |
| National EXS+ | 65.0% | 68.0% | 70.0% | 69.0% |
| School GDS | 29.0% | 26.0% | 40.0% | 39.0% |
| National GDS | 13.0% | 16.0% | 16.0% | 15.0% |
| No. pupils | 59 | 58 | 58 | 45 |
| Pupil No. Gap (EXS) | 6 | 3 | 0 | 0 |
| Pupil No. Gap (GDS) | 9 | 5 | 13 | 10 |



| % achieving EXS+ and GDS in maths at KS1 | | | | |
|--|-------|-------|-------|-------|
| | 2016 | 2017 | 2018 | 2019 |
| School EXS+ | 88.0% | 79.0% | 72.0% | 71.0% |
| National EXS+ | 73.0% | 75.0% | 76.0% | 76.0% |
| School GDS | 32.0% | 17.0% | 38.0% | 36.0% |
| National GDS | 18.0% | 21.0% | 22.0% | 22.0% |
| No. pupils | 59 | 58 | 58 | 45 |
| Pupil No. Gap (EXS) | 8 | 2 | -2 | -2 |
| Pupil No. Gap (GDS) | 8 | -2 | 9 | 6 |



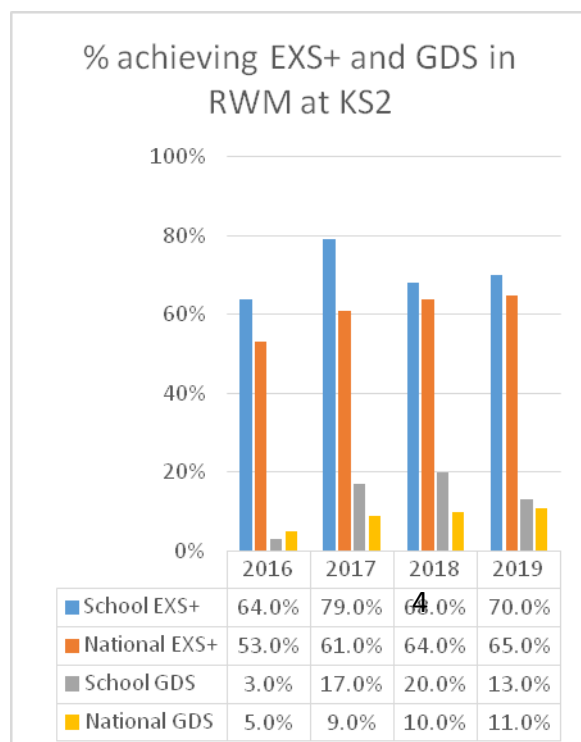
Key Stage 2

Note: Writing is teacher assessed only. In reading, maths and GPS (Grammar, punctuation and spelling) EXS+ = scaled score of 100+; high score = scaled score of 110+.

GDS = Greater Depth Standard (writing only). RWM = reading, writing and maths combined.

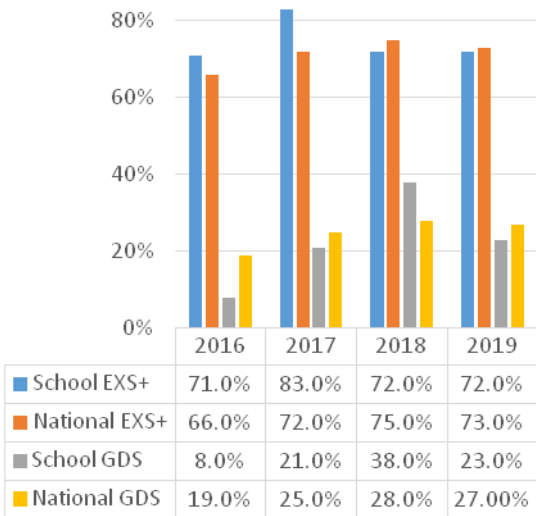
RWM

| % achieving EXS+ and high score/GDS in RWM at KS2 | | | | |
|---|-------|-------|-------|-------|
| | 2016 | 2017 | 2018 | 2019 |
| School EXS+ | 64.0% | 79.0% | 68.0% | 70.0% |
| National EXS+ | 53.0% | 61.0% | 64.0% | 65.0% |
| School GDS | 3.0% | 17.0% | 20.0% | 13.0% |
| National GDS | 5.0% | 9.0% | 10.0% | 11.0% |



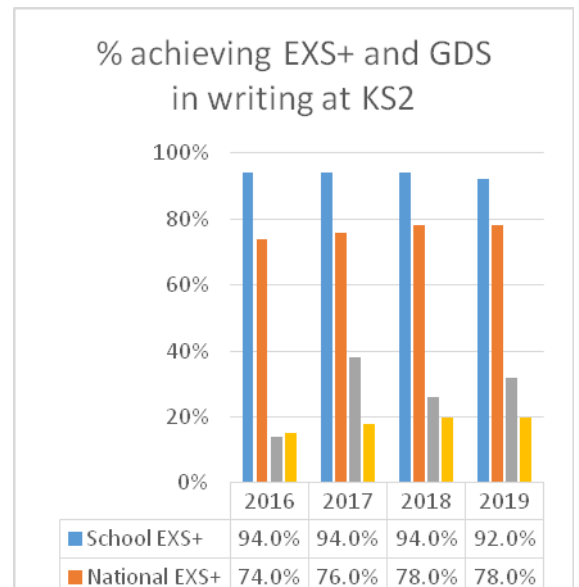
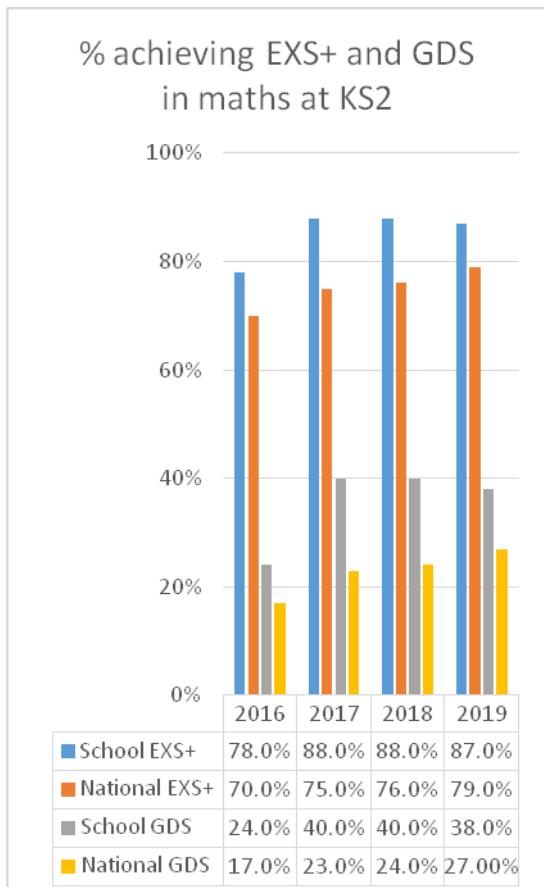
| | | | | |
|---|-------|-------|-------|-------|
| No. pupils | 49 | 48 | 50 | 60 |
| Pupil No. Gap (EXS) | 5 | 8 | 2 | 3 |
| Pupil No. Gap (GDS) | 2 | 3 | 5 | 1 |
| % achieving EXS+ and GDS in writing at KS2 | | | | |
| | 2016 | 2017 | 2018 | 2019 |
| School EXS+ | 94.0% | 94.0% | 94.0% | 92.0% |
| National EXS+ | 74.0% | 76.0% | 78.0% | 78.0% |
| School GDS | 14.0% | 38.0% | 26.0% | 32.0% |
| National GDS | 15.0% | 18.0% | 20.0% | 20.0% |
| No. pupils reading at KS2 | 49 | 48 | 50 | 60 |
| Pupil No. Gap (EXS) | 9 | 8 | 8 | 8 |
| Pupil No. Gap (GDS) | 0 | 9 | 3 | 7 |

Reading



| | | | | |
|--|-------|-------|-------|--------|
| % achieving EXS+ and high score in reading at KS2 | | | | |
| | 2016 | 2017 | 2018 | 2019 |
| School EXS+ | 71.0% | 83.0% | 72.0% | 72.0% |
| National EXS+ | 66.0% | 72.0% | 75.0% | 73.0% |
| School GDS | 8.0% | 21.0% | 38.0% | 23.0% |
| National GDS | 19.0% | 25.0% | 28.0% | 27.00% |
| No. pupils | 49 | 48 | 50 | 60 |
| Pupil No. Gap (EXS) | 2 | 5 | -1 | 0 |
| Pupil No. Gap (GDS) | -5 | -1 | 5 | -2 |

Writing



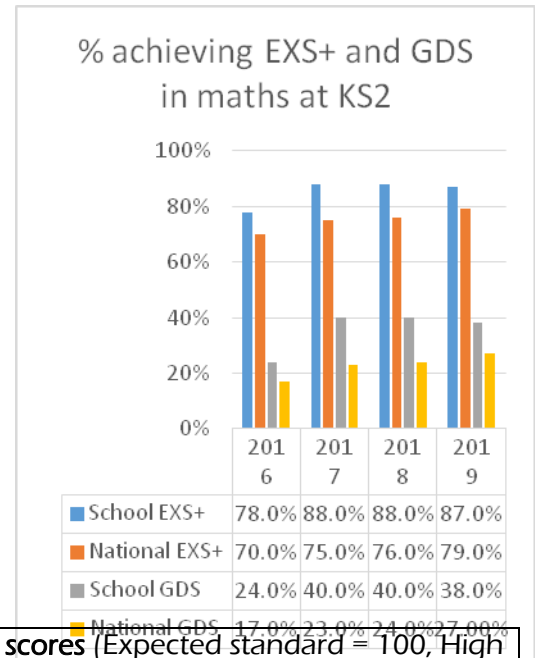
| | | | | |
|--|-------|-------|-------|-------|
| % achieving EXS+ and high score in maths at KS2 | | | | |
| | 2016 | 2017 | 2018 | 2019 |
| School EXS+ | 78.0% | 88.0% | 88.0% | 87.0% |
| National EXS+ | 70.0% | 75.0% | 76.0% | 79.0% |
| School GDS | 24.0% | 40.0% | 40.0% | 38.0% |

Maths

| | | National GDS | | | |
|---------------------|--|--------------|-------|-------|--------|
| | | 17.0% | 23.0% | 24.0% | 27.00% |
| No. pupils | | 49 | 48 | 50 | 60 |
| Pupil No. Gap (EXS) | | 3 | 6 | 6 | 4 |
| Pupil No. Gap (GDS) | | 3 | 8 | 8 | 6 |

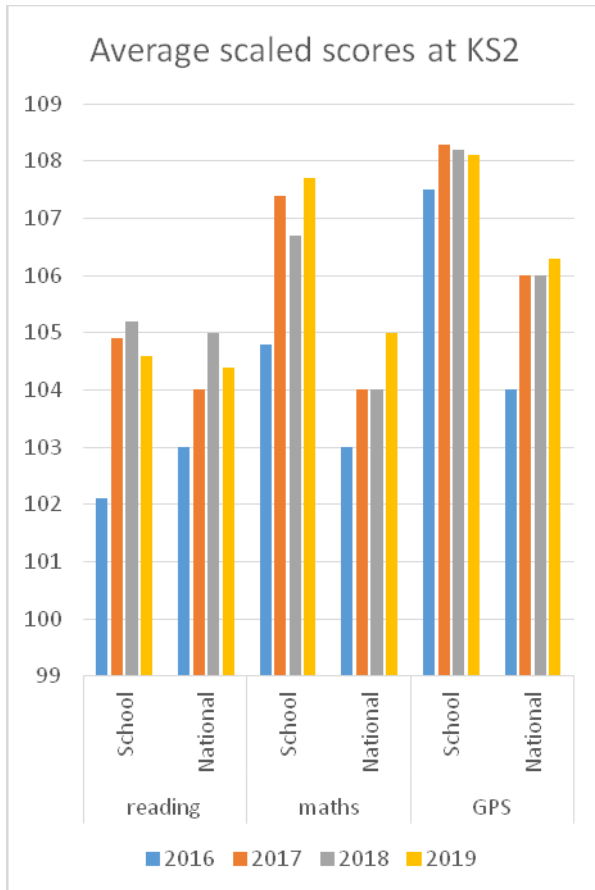
| % achieving EXS+ and high score in GPS at KS2 | | | | |
|---|-------|-------|-------|-------|
| | 2016 | 2017 | 2018 | 2019 |
| School EXS+ | 90.0% | 83.0% | 84.0% | 83.0% |
| National EXS+ | 73.0% | 77.0% | 78.0% | 78.0% |
| School GDS | 37.0% | 48.0% | 44.0% | 47.0% |
| National GDS | 23.0% | 31.0% | 34.0% | 36.0% |
| No. pupils | 49 | 48 | 50 | 60 |
| Pupil No. Gap (EXS) | 8 | 2 | 3 | 3 |
| Pupil No. Gap (GDS) | 6 | 8 | 5 | 6 |

Grammar, punctuation and spelling



Average scaled scores (Expected standard = 100, High score = 110)

| | | 2016 | 2017 | 2018 | 2019 |
|---------|----------|-------|-------|-------|-------|
| reading | School | 102.1 | 104.9 | 105.2 | 104.6 |
| | National | 103 | 104 | 105 | 104.4 |
| maths | School | 104.8 | 107.4 | 106.7 | 107.7 |
| | National | 103 | 104 | 104 | 105 |
| GPS | School | 107.5 | 108.3 | 108.2 | 108.1 |
| | National | 104 | 106 | 106 | 106.3 |



Progress

| KS2 Progress scores | | | | | |
|---------------------|----------|---------|---------|---------|---------|
| | | 2016 | 2017 | 2018 | 2019 |
| Reading | Reading | -1.24 | 1.34 | 0.72 | -0.5 |
| | Upper CI | 0.6 | 3.2 | 2.4 | 1.2 |
| | Lower CI | -3 | -0.6 | -1 | -2.2 |
| | Sig+/- | average | average | average | average |
| Writing | Writing | 1.76 | 4.68 | 2.91 | 2.41 |
| | Upper CI | 3.6 | 6.5 | 4.5 | 0.9 |
| | Lower CI | 0 | 2.9 | 1.3 | 0.4 |
| | Sig+/- | average | Sig+ | Sig+ | Sig+ |
| Maths | Maths | 1.22 | 3.42 | 2.51 | 2.11 |
| | Upper CI | 2.8 | 5.1 | 4.1 | 3.6 |
| | Lower CI | -0.4 | 1.7 | 0.9 | 0.6 |
| | Sig +/- | average | Sig+ | Sig+ | Sig+ |

